



OCTOBER 2022



ProPhaseLabs.com

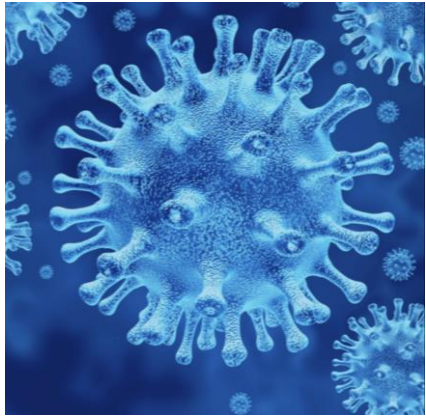
CORPORATE PRESENTATION

NASDAQ: **PRPH**

FORWARD LOOKING STATEMENTS

This presentation contains forward-looking statements relating to our strategy and business objectives. All statements other than statements of historical facts included in this presentation may be deemed to be forward-looking statements including statements regarding our strategy, plans, objectives and initiatives, including those related to our plans to expand our in-house clinical testing capabilities and genomics testing offerings and our plans to develop Equivir, Equivir G (Rx) and Linebacker. You can identify forward-looking statements by words such as “anticipate,” “believe,” “could,” “estimate,” “expect,” “intend,” “may,” “plan,” “potential,” “predict,” “project,” “should,” “will,” “would” or the negative of those terms, and similar expressions that convey uncertainty or future events or outcomes. These forward-looking statements involve known and unknown risks, uncertainties, and other factors that may cause our actual results, performance, or achievements to be materially different from those contemplated, projected, forecasted, estimated or budgeted, whether expressed or implied, by these forward-looking statements including risks related to consumer demand for our diagnostic and genomic services, the competitive environment, challenges relating to entering into new business lines, the failure to obtain and maintain certain regulatory approvals, our ability to collect payment for the diagnostic tests we deliver, including our ability to collect payment from uninsured individuals if emergency funding is not allocated to the HRSA uninsured program in the future, and our ability to continue to execute on our business plan. Additional risks and uncertainties relating to our business can be found under the heading “Risk Factors” in our Annual Report on Form 10-K for the year ended December 31, 2021 and our subsequent Quarterly Reports on Form 10-Q, as well as our other filings with the Securities and Exchange Commission. These forward-looking statements are based on current expectations, estimates, forecasts and projections and are not guarantees of future performance or development. The forward-looking statements contained in this presentation are made as of the date hereof, and we do not assume any obligation to update any forward-looking statements except as required by applicable law. Readers are cautioned not to place undue reliance on any forward-looking statements contained in this presentation.

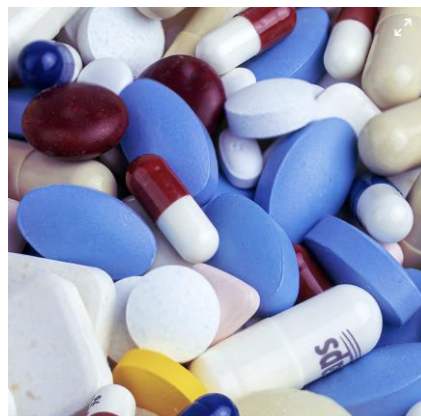
THE FIVE DIVISIONS OF PROPHASE LABS



**ProPhase
Diagnostics**



**Nebula
Genomics**



**ProPhase
BioPharma**

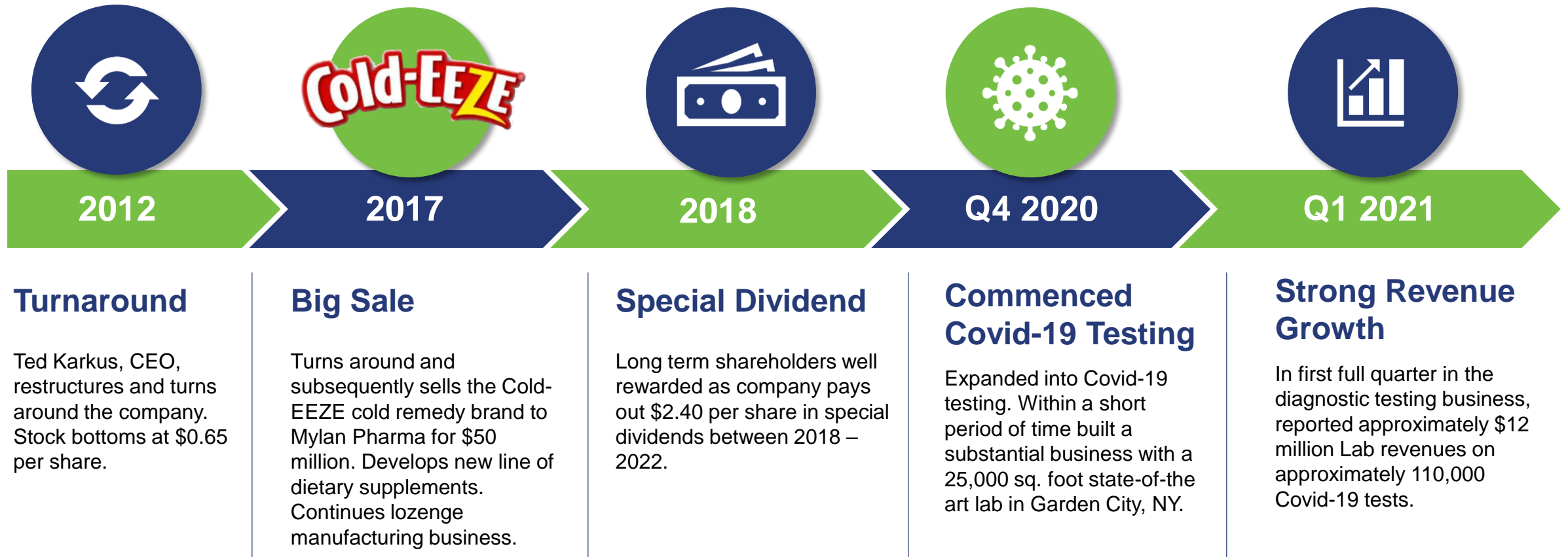


**Pharmaloz
Contract
Manufacturing**



**TK
Supplements**

History of Strong Execution



ProPhase DIAGNOSTICS

Operates two state-of-the-art, Clinical Laboratory Improvement Amendments (CLIA) accredited laboratories, one in New York and one in New Jersey. Expanded New York laboratory to approximately 30,000 total square feet in June 2022.

Provide a wide range of important diagnosis, screening and evaluation of diseases, including:

- COVID-19 PCR Viral RNA
- COVID-19 antigen testing with results in 15 minutes
- Respiratory Pathogen Panel (RPP) Molecular tests
- Polymerase chain reaction (PCR) for Influenza A and B
- Respiratory viruses
- Pneumonia-causing bacteria
- Other infectious diseases

Announced plans for expansion of lab to include traditional clinical testing and genomics testing. Testing capabilities will include and are not limited to: Chemistry and Immunoassay, Hematology, Hemostasis and Urinalysis.

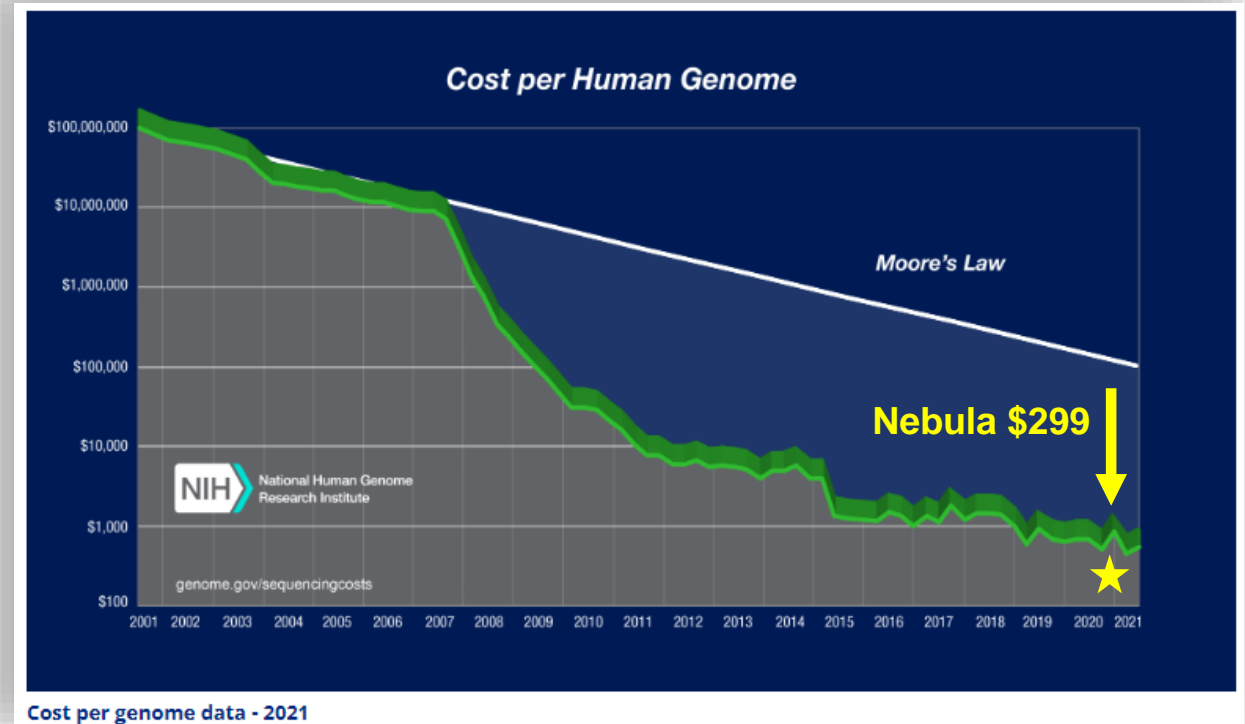


Continued Strong Execution

Q3 2021	Year End 2021	1H 2022	Reported TTM	Q2 2022	Q3 2022
Advanced Genetic Testing Acquires Nebula Genomics for \$14.6 million. Will leverage Food, Drug and Mass distribution and genomic sequencing in CLIA labs. Significant upside.	Full Year Results Strong Revenue and Earnings Growth For the Year Ended December 31, 2021: Reported Net revenue of \$79.0 million vs. \$14.5 million for the year ended 12/31/2020. \$6.3 million net income. \$18.1 million adjusted EBITDA. 15.5 million shares outstanding.	1H 2022 Results Record net revenue of \$76.6 million for 1H 2022 vs \$24.4 million for 1H 2021. \$19.9 million net income or \$1.28 EPS. Cash from operations \$25.1 million. \$30.4 million adjusted EBITDA. Paid two \$0.30 special dividends in March and June 2022.	Reported TTM Results Record net revenue of \$131 million for reported TTM vs 33.4 million for the previous period. +293% increase. \$26.5 million net income. \$45.6 million adjusted EBITDA. Shares outstanding as of June 30, 2022 totals 15.6 million shares.	Laboratory Expansion & New Subsidiary Announced expansion of CLIA laboratory to include traditional clinical testing capabilities. In parallel, plans underway to expand in-house genomics testing offerings. Announced formation of ProPhase BioPharma. Licensed two broad based anti-virals, one OTC and one Rx.	Licensing of Compounds Obtained exclusive rights worldwide to develop and commercialize Equivir (OTC) and Equivir G (Rx), broad based anti-virals. Also licensed the patented Linebacker (LB-1 and LB-2) portfolio. Initial goal is to develop LB-1 as an anti-cancer agent to be used as a co-therapy that targets PIM kinase receptors, a growth factor expressed in cancer.

Nebula Genomics was the first company to bring the cost of sequencing a human genome below \$300 and subsequently became the largest direct-to-consumer Whole Genome Sequencing company. ProPhase's goal is to dramatically increase Nebula's sales by decreasing price, decreasing turnaround times and increasing distribution to both businesses and consumers. In particular, universities conducting genetic research is a large opportunity.

- Acquisition of **Nebula Genomics** provides a leading position in Whole Genome Sequencing (WGS). It provides access to affordable and secure personalized genetic testing. WGS is a genetic testing technology that obtains comprehensive data on every gene and all of your chromosomes in your DNA. WGS can be used to examine your ancestry, health, diet, rare gene mutations and rare diseases
- ProPhase's goal is to integrate this comprehensive genomic testing into the Company's CLIA-certified labs. This would provide faster turnaround time of results and reduced pricing. Company also plans to leverage its distribution in over 40,000 food, drug and mass retail stores. Each of these initiatives could dramatically grow sales going forward
- ProPhase is actively pursuing opportunities to expand WGS capabilities and personalized, precision medicine solutions for both consumer and physician markets



4000+ published genetic studies, with new research published every week but ...

1. Hard to understand for most people. 2. Locked behind paywalls.

Stay informed about the latest genomic discoveries and learn how they might be relevant to you.

- Accessible explanation of research findings
- Updates every week
- Personalization based on sequencing results
- Polygenic scores

12/2018

☆ Colorectal cancer (Huyghe, 2018) [🔗](#)

Intestines Cancer

STUDY SUMMARY

Genetic variants in genes involved in *transcription*, cell signaling, and the immune system are associated with the risk of colorectal cancer.

YOUR RESULT

98th
PERCENTILE
Above average genetic predisposition to colorectal cancer

STUDY DESCRIPTION

Colorectal cancer occurs in either the colon or rectum, which are parts of the large intestine. It is the third most common cancer in the United States, but genetic risk factors of colorectal cancer remain poorly understood.

[View Full Report](#)

3/2020

☆ Breast cancer (Shu, 2020) [🔗](#)

Cancer Breasts

STUDY SUMMARY

Discovery of 28 novel genomic regions associated with breast cancer risk.

YOUR RESULT

97th
PERCENTILE
Above average genetic predisposition to breast cancer

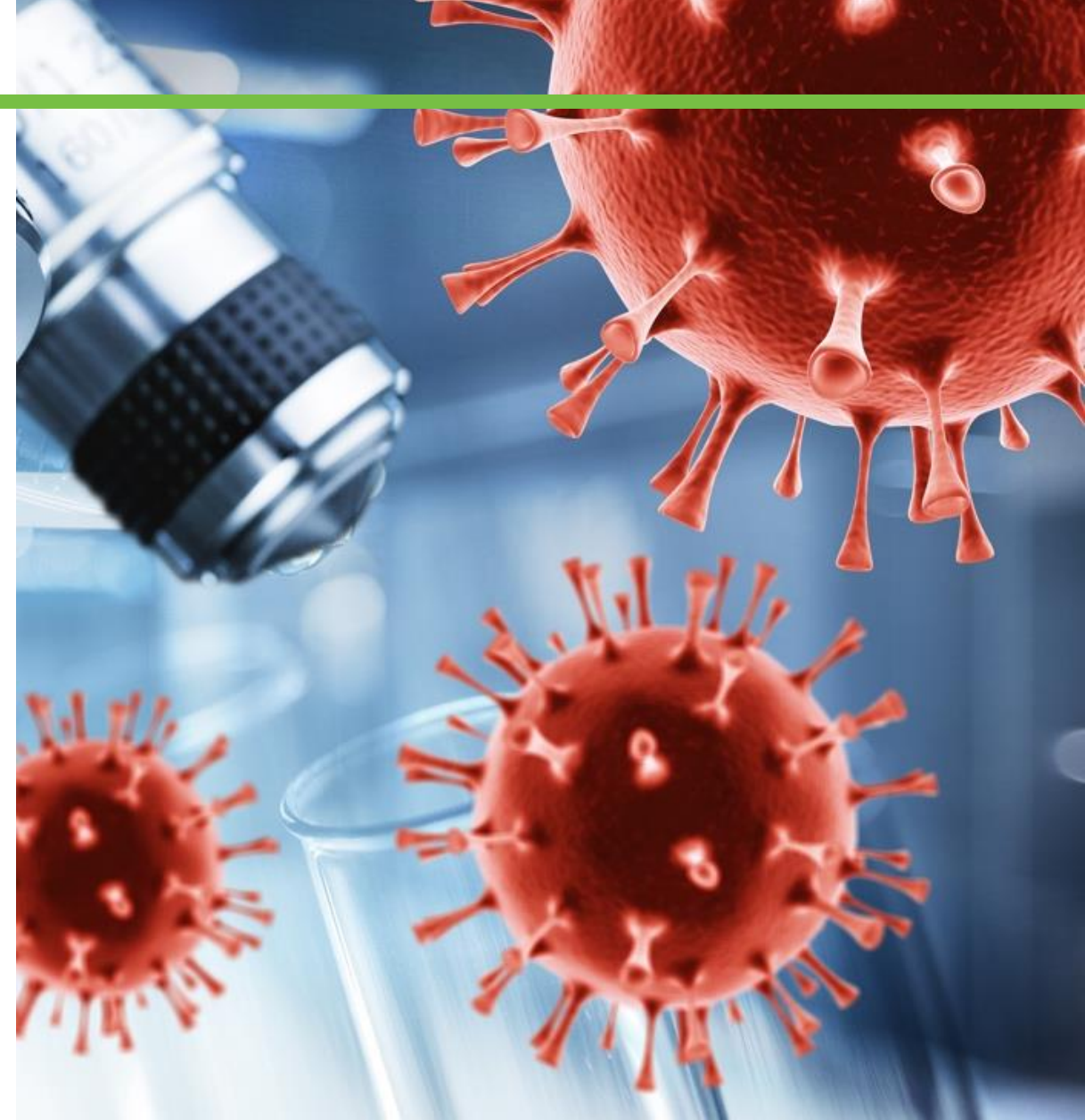
STUDY DESCRIPTION

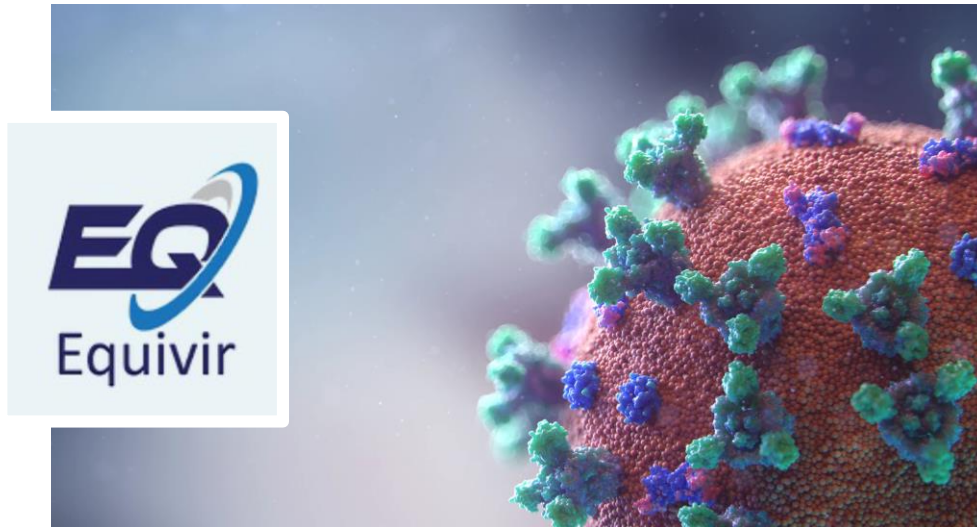
Breast cancer is the second most commonly diagnosed cancer in the United States. Much research has been done to find genetic variants associated with predisposition to breast cancer. However, most studies have been conducted in women of European ancestry, potentially missing breast cancer-associated variants that are less common in Europeans.

[View Full Report](#)

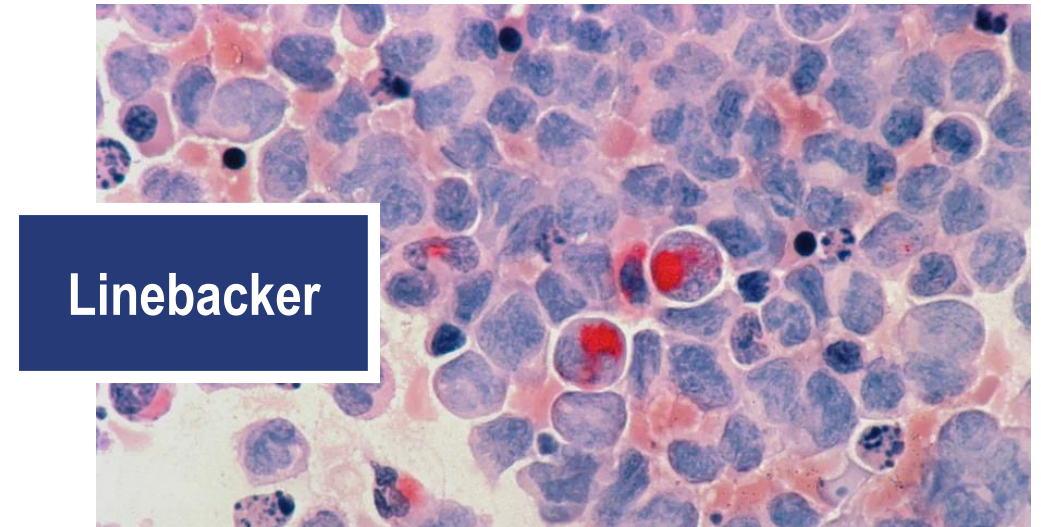
PROPHASE BIOPHARMA

- Announced in June 2022 the formation of wholly-owned subsidiary **ProPhase BioPharma, Inc. (PBIO)** for the licensing and development of novel drugs, compounds and biotechnology.
- **PBIO** will focus on creating and formulating new compounds that can change the outcomes of healthcare. All currently planned development costs to be funded out of a small percentage of current working capital or current cash flow.
- The initial proprietary compounds licensed by PBIO were developed by **Global Research and Discovery Group (GRDG)**.
- **GRDG is a Scientific think tank and research organization** that works with BARDA (Biomedical Advance Research Development Authority), DARPA (Studies and Defense Advanced Research Projects Agency) and the Potomac Institute for Policy. Its goal is to provide novel, multi-target therapeutics for challenging pharmacological needs.





ProPhase has the exclusive worldwide rights to develop and commercialize patented **Equivir** and **Equivir G (Rx)**, proprietary compounds which have shown to have potential activity against certain viruses associated with serious viral outbreaks.



ProPhase has the exclusive worldwide rights to develop and commercialize patented Linebacker LB1 and LB2 in the following fields: cancer, inflammatory diseases or symptoms, memory-related syndromes, diseases or symptoms, including dementia and Alzheimer's Disease. LB1 and LB2 are proprietary compounds which have shown in preliminary in-vitro screening tests to have potential applicability to Cancer as a co-therapy, Bacterial and viral infections, Neurological, Diabetes and Pain modulation.

Linebacker is a modified polyphenol. Polyphenols are substances found in many nuts, vegetables and berries. Linebacker compounds are modified Myricetin, which is a common plant-derived flavonoid. Flavonoids are polyphenols.

- Myricetin exhibits a wide range of activities that include strong anti-oxidant, as well as potential anticancer, antidiabetic and anti-inflammatory activities. It displays activities that are related to the central nervous system. Studies have suggested that it may be beneficial to protect against diseases such as Parkinson's and Alzheimer's.*
- Linebacker 1 (LB-1) is Mono-chlorinated Myricetin with a Chlorine atom substituted for the Hydroxy group at 5' (position 5 on the B-ring).
- Linebacker 2 (LB-2) is Di-chlorinated Myricetin with Chlorine atoms substituted for the Hydroxy groups at 5' and 7 (position 5 on the B-ring and position 7 on the A-ring).
- LB-1 is being developed as a co therapy to down-regulate PIM (proviral integration site for moloney murine leukemia virus) kinase which plays a key role as an oncogene in various cancers including myeloma, leukemia, prostate and breast cancers.
- Chemotherapy drugs alone, like TAXOL (chemically known as paclitaxel), kill healthy cells alongside tumorous ones. LB-1 is being developed to focus directly on the PIM expressions potentially rendering the cancer cell transcription and replication useless, so chemotherapy drugs such as TAXOL can effectively kill the existing tumor cell. LB-1 may also be developed as a potential stand alone post therapy to ensure cancer cells do not regenerate.

*Source: <https://www.ncbi.nlm.nih.gov/pmc/articles/PMC4772053/>

THE FOUR INITIAL TARGETS FOR LINEBACKER AS A CO-THERAPY:

TAXOL:

Taxol is among the most affordable and best-selling chemotherapy drugs, with annual sales over \$1 billion.

<https://videocast.nih.gov/watch=35576#:~:text=Taxol%20is%20among%20the%20most,annual%20sales%20over%20%241%20billion.>

DOXORUBICIN:

The global market for Doxorubicin estimated at US\$1.1 Billion in the year 2022, is projected to reach a revised size of US\$1.3 Billion by 2026, growing at a CAGR of 5.3% over the analysis period.

https://www.reportlinker.com/p06031392/Global-Doxorubicin-Industry.html?utm_source=GNW

CISPLATIN:

The Cisplatin market revenue was 326 Million USD in 2019, and is projected to reach 547 Million USD in 2025, with a CAGR of 8.95% during 2020-2025.

<https://www.marketwatch.com/press-release/cisplatin-market-size-in-2022-top-countries-data-competitive-landscape-corporate-strategy-share-industry-analysis-by-top-manufactures-growth-insights-and-forecasts-to-2029-128-report-pages-2022-06-07>

TOPOTECAN:

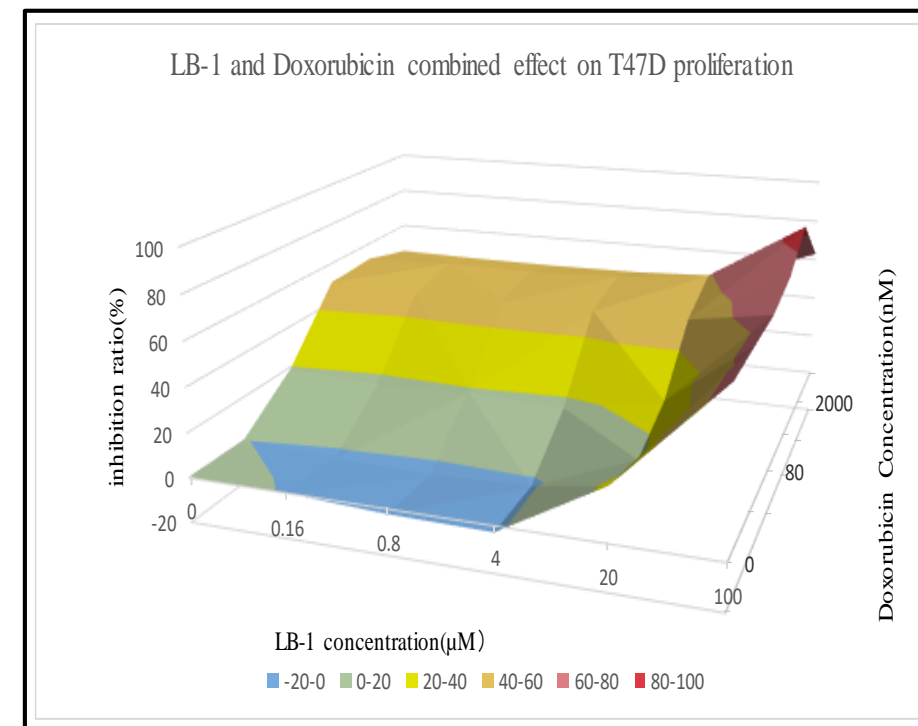
Manufactured by GlaxoSmithKline as Hycamtin.

LB-1 CO-THERAPY WITH DOXORUBICIN

LB Activity as Co-therapy with Doxorubicin in cell line proliferation in-vitro study

Linebacker-1+Doxorubicin-Relatively Cell inhibition of vehicle control(%)						
Dox (nM) \ LB-1 (μM)	100	20	4	0.8	0.16	0
10000	62.97	45.89	45.16	44.60	44.68	45.28
2000	86.95	59.08	54.49	52.62	53.10	51.6
400	73.67	49.43	49.01	49.15	47.85	50.23
80	68.87	25.55	16.54	18.69	16.67	19.26
16	69.37	15.92	-2.16	-3.70	-2.43	0.17
0	69.66	23.23	-2.69	-2.14	-0.06	0.54

- LB-1 alone inhibits cell proliferation at 69.66% at 100uM
- Doxorubicin alone inhibits cell proliferation at 51.6% at 2000nM
- LB-1 and Doxorubicin combined inhibits cell proliferation at 86.95% (100uM of LB1 + 2000nM Doxorubicin)



Doxorubicin is used in combination with other medications to treat certain types of bladder, breast, lung, stomach, and ovarian cancer; Hodgkin's lymphoma (Hodgkin's disease) and non-Hodgkin's lymphoma (cancer that begins in the cells of the immune system); and certain types of leukemia (cancer of the white blood cells), including acute lymphoblastic leukemia (ALL) and acute myeloid leukemia (AML, ANLL). Doxorubicin is also used alone and in combination with other medications to treat certain types of thyroid cancer and certain types of soft tissue or bone sarcomas (cancer that forms in muscles and bones). It is also used to treat neuroblastoma (a cancer that begins in nerve cells and occurs mainly in children) and Wilms' tumor (a type of kidney cancer that occurs in children). Doxorubicin is in a class of medications called anthracyclines. It works by slowing or stopping the growth of cancer cells in your body.

Equivir

Issued/Granted as:

US10383842

- In-vitro studies demonstrating broad activity against multiple viral types
- In-vitro data shown activity for Coronavirus (SARS), Rhinovirus, influenza (H1N1, H3N2, H5N1, H7N9) and Ebola
- Blend of Polyphenols - 60% Myricetin; 38% Hesperidin; 2% Piperine

Equivir G

Issued/Granted as:

US11311563

- Contains Myricetin, Hesperidin, Piperine and 10% Gallic Acid
- In-vero cell study shows potential to inhibit viral replication and induce viral inhibition for SARS-Cov-2
- Targeted as Rx antiviral for SAR-Cov-2

LINEBACKER PORTFOLIO : IP 10,123,991, & 10,966954

Linebacker 1 (LB-1)

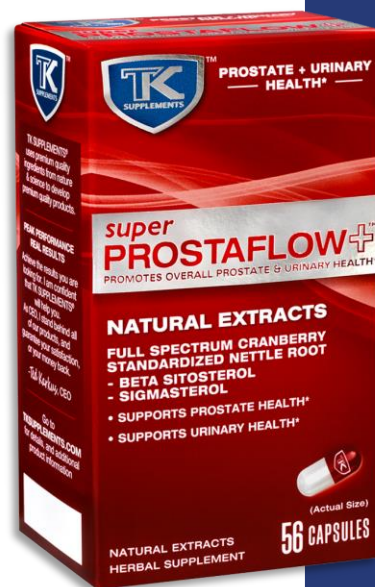
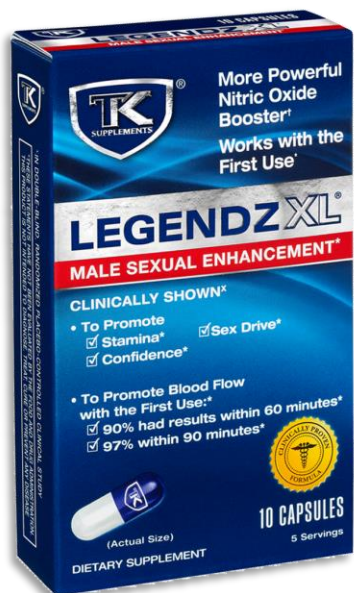
- Data shows significant co-activity with chemotherapy drugs (including the 4 we are initially focused on) utilizing 10 cancer cell lines
- Clinical trials will be performed utilizing LB-1 as a co-Therapy to the initial 4 chemotherapy drugs (Taxol, Doxorubicin, Topotecan, Cisplatin)
- May expand to other chemotherapy drug lines.
- Potential for LB-1 as co-therapy treatment for neurological diseases such as Alzheimer's and Dementia

Linebacker 2 (LB-2)

- In vero cell studies shows high antibacterial and antiviral potential.
- LB-2 when combined with antibiotics like Imipenem may potentially inhibit a wide variety of bacteria infections.
- Positioned to be a broad-spectrum solution for antibacterial indications for the military uses.



TK Supplements® is dedicated to promoting better health, energy and sexual vitality.



We offer a line of dietary supplement products under the **TK Supplements®** brand, including:

- **LEGENDZ XL®**, for male sexual enhancement
- **TRIPLE EDGE XL®**, a daily energy and stamina booster
- **SUPER PROSTAFLow+™**, a supplement to support prostate and urinary health

Legendz XL has distribution in Rite Aid, Walgreens and other retailers, and via ecommerce, and is now achieving broader distribution at CVS and Walmart. Triple Edge XL, is now gaining retailer acceptance as well.

One of the Largest State-of-the-Art Lozenge Manufacturers in the U.S.

- **CONTRACT MANUFACTURING** - 60,000 sq. ft. climate-controlled facility on 12 acres operating under FDA 21 CFR 210 & 211 guidelines provides the ability to offer products for diversified needs
- **PRIVATE LABEL** - Partners with brokers and retailers to provide superior quality products
- **MARKETING** - Offers the ability to deploy various strategies to help customers market their products successfully
- **RESEARCH & DEVELOPMENT** - Works to develop and formulate customers' unique, best in class products



Pharmaloz
Manufacturing, Inc.

Ted Karkus Chairman & CEO

Mr. Karkus is the CEO and Chairman of the Board of Directors of ProPhase Labs, Inc. As CEO, he directly manages and oversees corporate strategy, product development, sales and marketing, and R&D. Mr. Karkus has long focused his career on investing, management consulting, and managing emerging growth companies. He started his career on Wall Street working for a variety of investment banks. Mr. Karkus financed and advised ID Biomedical, a biotech/vaccine company, when it was valued at approximately \$25 million and near bankruptcy. He successfully persuaded the board of directors into making difficult but necessary changes to management, including the replacement of the CEO, and helped to redirect their strategic focus. Seven years later, the company was sold to GlaxoSmithKline for more than \$1.4 billion. While advising ID Biomedical, he began a similar decade-long engagement with ProPhase Labs. After years of declining revenues, increasing losses, and questionable management activities, the Company's direction was in dire need of change—and the shareholders' interests in need of protection. Mr. Karkus initiated a highly risky but successful proxy contest in 2009 that led to his position as CEO. After inheriting a severely declining brand portfolio, he restructured the go-to-market strategy for the flagship Cold-EEZE brand and grew revenues significantly. The net result: in 2017, ProPhase Labs sold the Cold-EEZE brand for \$50 million to Mylan, a multibillion-dollar pharmaceutical company. Mr. Karkus graduated Tufts University with a BS in Psychology and Magna Cum Laude Honors in 1981 and Columbia University School of Business with an MBA in Finance and Beta Gamma Sigma Honors in 1984.

Bill J. White Chief Financial Officer

Bill J. White has more than 30 years of experience in financial management, operations and business development and is currently serving as the Chief Financial Officer of ProPhase Labs, Inc. Prior to ProPhase, Mr. White served as Chief Financial Officer of Intellicheck, Inc. (Nasdaq: IDN) and FocusMicro, Inc. ("FM"). As a co-founder of FM, Mr. White played an integral role in growing the business from the company's inception to over \$36 million in annual revenue in a five-year period. Mr. White holds a Bachelor of Arts in Business Administration from Washington State University.

Jason Karkus President

- **ProPhase Diagnostics, Inc.**

Jason was instrumental in the explosive growth of ProPhase Diagnostics by directly generating tens of millions of dollars in revenue in 2021. He leads multiple areas including sales, business development, logistics operations, and account management. In addition, he helped develop two elite CLIA-certified labs, build on new technologies and acquisitions, and sustain the company's reputation for quality and innovation. Jason built and oversees approximately two dozen account managers and customer service reps who provide 24/7 service. Jason and his team exceed expectations for ProPhase's customers with a seamless service experience accomplished through outstanding communication and a results-first mindset. Jason has a background in sales and development with leading real estate firms Douglas Elliman and Newmark Knight Frank. He is a graduate of the University of Maryland.

Alice Lioi EVP/COO

- **ProPhase Diagnostics, Inc.**
- **ProPhase BioPharma, Inc.**

Alice oversees all ProPhase lab operations. She ensures accuracy, exemplary medical quality, service delivery, and client satisfaction with the highest compliance standards. She brings more than 18 years of progressive laboratory leadership experience in both clinical and research. Prior to joining ProPhase Labs, she held the position of VP of Lab Operations at Quest Diagnostics. Throughout her career, she also efficiently managed labs at Brookdale Hospital and Medical Center in New York. While there, she served as the Administrative Director of Clinical and Anatomical Pathology Service and AdvantageCare Physicians, covering 36 medical facilities and working with both patients and physicians to optimize care. Earlier in her career, Alice was a Clinical Laboratory Technologist at the Quest Diagnostics Syosset location. Alice graduated from SUNY Stony Brook with a Bachelor of Science in Clinical Laboratory Science. She holds a NY State License as a Clinical Laboratory Technologist.

Sergio Miralles

EVP/Chief Information Officer

• ProPhase Diagnostics, Inc.

Sergio Miralles is an experienced IT Leader, with over 12 years of experience in enterprise level Cybersecurity, Infrastructure, and Architecture. At ProPhase Labs, Sergio is responsible for ensuring a complete end-to-end technology solution that links its lab customers' patient data via interface to efficiently process and report results. Previously, Sergio founded and led a successful IT consulting firm overseeing 18 IT consultants. For the last 5 years, his primary focus has been on the medical, lab, and diagnostics business. Sergio holds several certifications from Cisco, ISC2, and CompTIA.

Sam Beeler

Chief Strategy Officer

• ProPhase Precision Medicine

Sam A. Beeler is an accomplished healthcare executive with over 17 years of extensive leadership experience spanning multiple ecosystems, including hospital-based medicine, multi-specialty private practice, clinical research, and community health. Sam has served in progressive enterprise leadership, strategy, and operations roles for Advantage Care Physicians, The Advisory Board, TeamHealth, PivotHealth and more. He was appointed as Director of Health and Human Services for a municipality in NJ. He is the co-founder of a disruptive clinical research and human performance laboratory with clients that include NFL, NHL, and MLB teams, the United States Navy Seals, Olympic athletes, and high net worth clientele from around the world. He has a global network of professional relationships across healthcare, biotech and government. Sam has studied at Rutgers University, Cornell University and Weill-Cornell Medicine. He has completed executive level coursework at Harvard.

Kamal Obbad

SVP, Director of Sales and Marketing

• ProPhase Precision Medicine

Kamal is co-founder of Nebula Genomics. He received his undergraduate degree at Harvard University and did graduate studies in computer science as a Gates-Cambridge Fellow at the University of Cambridge. Prior to founding Nebula, Kamal led teams at Google. For his work, Kamal has received multiple honors including being named to the Forbes 30 under 30 list.

Dr. George Church

Advisory Board

• ProPhase Precision Medicine

Along with being a co-founder at Nebula Genomics, Dr. George Church is also Professor of Genetics at Harvard Medical School and Director of PersonalGenomes.org. His 1984 Harvard Ph.D. included the first methods for direct genome sequencing, molecular multiplexing & barcoding. This led to the first genome sequence (pathogen, *Helicobacter pylori*) in 1994. His innovations have contributed to nearly all "next-generation" DNA sequencing methods and companies (CGI-BGI, Life, Illumina, Nanopore). His honors include election to NAS & NAE & Franklin Bower Laureate for Achievement in Science. He has co-authored 590 papers, 155 patent publications & one book (Regenesi).

INVESTMENT HIGHLIGHTS

- **Record Revenue and Earnings Growth For the Six Months Ended June 30, 2022:**
Reported Net revenue of \$76.6 million as compared to \$24.4 million for the six months ended June 30, 2021. \$19.9 million net income. \$30.5 million adjusted EBITDA.
Virtually all gains attributed to organic growth.
- **Strong Revenue Outlook:** Company anticipates continued strong year over year growth in revenues, earnings and cash flow for 2022.
- **Improved Cash Position:** \$53.6 million in working capital as of June 30, 2022. Our aggregate cash, cash equivalents and marketable equity securities as of June 30, 2022, were \$27.5 million.

Stock Symbol:.	PRPH
Exchange:	NASDAQ
Recent Price:	\$11.78 (a/o 10/04/2022)
52 Wk. Range:	\$5.09 - \$15.25 (a/o 10/04/2022)
Market Cap:	\$188M (a/o 10/04/2022)
Shares Outstanding:	16.0M
Free Float:	12.9M
Insider Ownership:	19.5%
Institutional Ownership:	10.7%
Debt to Capital	11.1%
Average Daily Volume:	192K
Short Interest	0.56%*

HISTORY OF SPECIAL DIVIDENDS:

Date	Amount
6/3/2022	\$0.30
3/10/2022	\$0.30
6/3/2021	\$0.30
12/12/19	\$0.25
1/24/2019	\$0.25
6/5/2018	\$1.00

PRPH DAILY CHART:



ProPhase Labs (NASDAQ: PRPH) is a diversified diagnostics and genomics company that seeks to leverage its CLIA lab services to provide whole genome sequencing and research direct to consumers and build a genomics data base to be used for further research. The Company continues to provide traditional CLIA molecular laboratory services, including COVID-19 testing.



- **PROPHASE DIAGNOSTICS:** Operates CLIA-accredited laboratories. These labs provide a wide range of testing for diagnosis, screening and evaluation of diseases, including COVID-19 testing, Immunity and Antigen tests, with a current capacity to process up to 50,000 tests per day. Built a large and diverse customer base that led to record reported financial results in Q4 2021 and Q1 2022. Announces plans for expansion of lab to include traditional clinical testing and genomics testing. Testing capabilities will include and are not limited to: Chemistry and Immunoassay, Hematology, Hemostasis and Urinalysis.
- **PROPHASE PRECISION MEDICINE:** Recent acquisition of Nebula Genomics provides a leading position in Whole Genome Sequencing (WGS). It provides access to affordable and secure personalized genetic testing. Whole-Genome Sequencing is a genetic testing technology that obtains comprehensive data on every gene and all of your chromosomes in your DNA. WGS can be used to examine your ancestry, health, diet, rare gene mutations and rare diseases. In conjunction with the expansion of its clinical lab, ProPhase is taking steps to expand its offerings to include whole genome sequencing and an array of genetic tests in-house.
- **PROPHASE BIOPHARMA:** Formed for the licensing and development of novel drugs, compounds and biotechnology. Obtained exclusive rights worldwide to develop and commercialize Equivir (OTC) and Equivir G (Rx), broad based anti-virals. Also executed a license agreement for the Linebacker portfolio (LB-1 and LB-2), two patented small molecule PIM kinase inhibitors with significant potential across multiple therapeutic indications. LB-1 is designed as an anti-cancer agent to be used as a co-therapy that targets PIM kinase receptors, a growth factor expressed in cancer.
- **SUCCESSFUL IN-HOUSE TK SUPPLEMENTS® BRAND:** Created dietary supplements product line, sold at CVS, Walgreens, Walmart & more.
- **ONE OF THE LEADING LOZENGE CONTRACT MANUFACTURERS IN THE U.S.:** State-of-the-art lozenge manufacturer.



CONTACT



ProPhaseLabs.com

TED KARKUS
Chairman & CEO

711 Stewart Ave., Suite 200
Garden City, NY 11530

INSTITUTIONAL INVESTOR RELATIONS

P: 267-880-1111

E: investorrelations@prophaselabs.com

RETAIL INVESTOR RELATIONS

John Boidman

Renmark Financial Communications

P: 514-939-3989

E: jboidman@renmarkfinancial.com